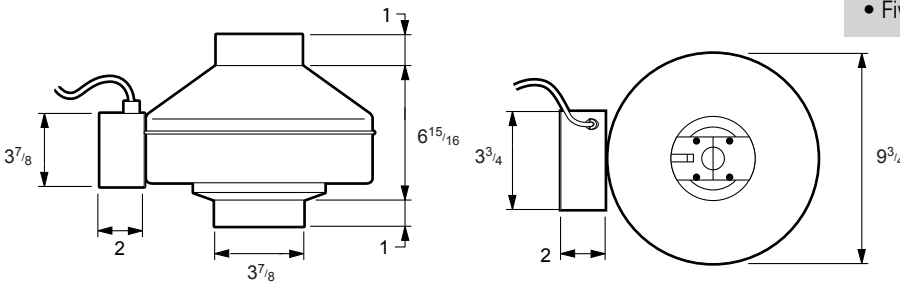


# DEDPV-705

Dryer Exhaust Fant

## STANDARD FEATURES

- Dryer Exhaust Duct Power Ventilator (DEDPV)
- Pressure-sensing switch automatically turns on the fan
- LED indicator display panel & temperature limit switch
- Short duct junctions and qty (4) 4" fast clamps for easy installation and maintenance
- Performance certified by HVI
- Safety certified by UL to the DEDPV supplement to UL705
- Safety certified by UL to CSA C22.2 No. 113
- Five-year factory warranty



Model	Metal Gauge	Weight
DEDPV-705	22	10

All dimensions in inches. Weights in pounds.

Fan Specifications							Motor Specifications				
Line	Qty	Model No.	Tag	CFM	SP	Fan RPM	Watts	Volts	Phase	Hertz	Encl
1											
2											
3											
4											

Accessory Items	1	2	3	4	Accessory Items	1	2	3	4

Project: \_\_\_\_\_ Submitted: \_\_\_\_\_  
 Customer: \_\_\_\_\_ Approved: \_\_\_\_\_  
 Location: \_\_\_\_\_

United States 10048 Industrial Blvd. • Lenexa, KS 66215 • 1.800.747.1762 • www.fantech.net  
 Canada 50 Kanalfakt Way • Bouctouche, NB E4S 3M5 • 1.800.565.3548 • www.fantech.net

Fantech reserves the right to make technical changes.  
 For updated documentation please refer to [www.fantech.net](http://www.fantech.net)

