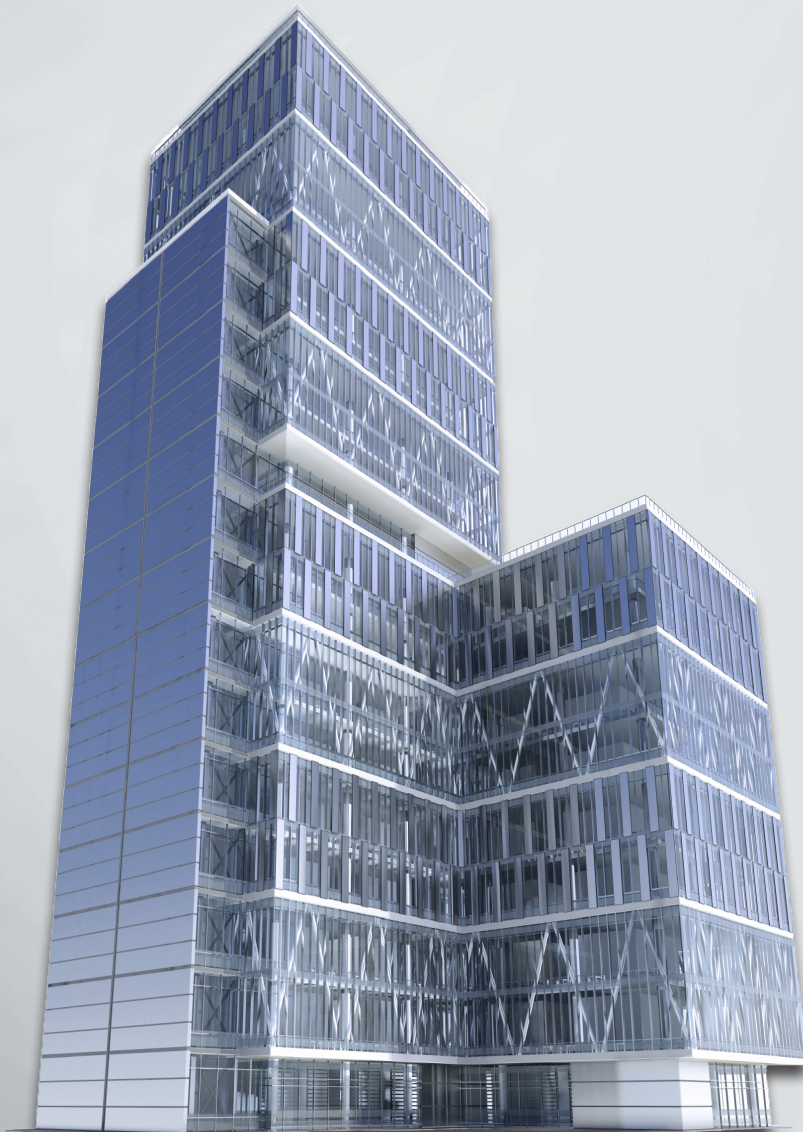
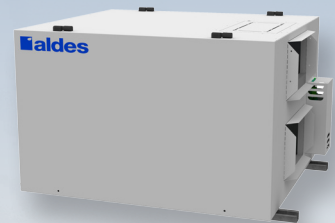


American **Aldes**

Florida Power & Light Utility Rebate Program
for Energy Recovery in Commercial Buildings



Aldes and FPL

Do you own or manage a building that is a commercial rate customer of Florida Power & Light (FPL)?

*Would a **\$25,000** rebate interest you?*

FPL has implemented an exciting new program that creates real operational savings for owners of new and existing buildings such as: schools, malls, condominiums/apartments, stores, and more.

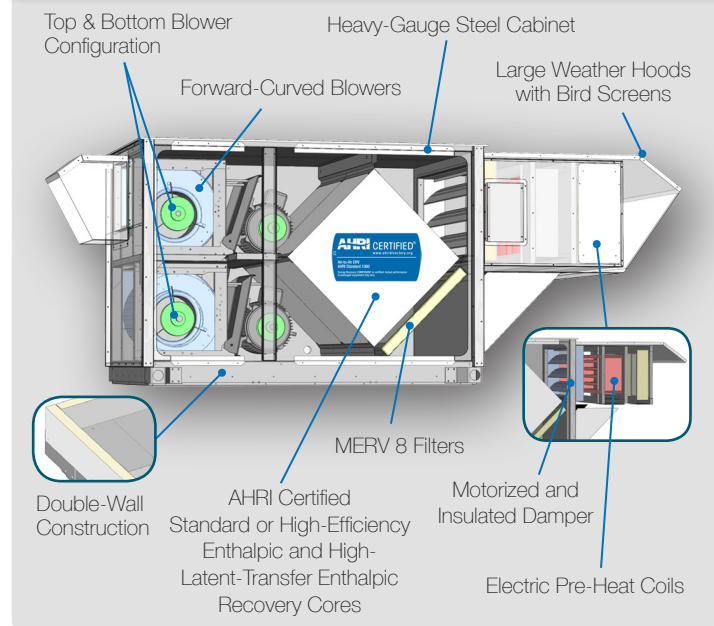
According to the U.S. Department of Energy, nearly 45 percent of a building's energy consumption goes toward fulfilling HVAC requirements. Identifying and implementing efficiency measures is a major initiative for Florida Power & Light (FPL) to reduce the need for building new power plants.

FPL has determined that one of the most cost-effective and easiest methods to achieve these savings in Florida buildings is the installation of an energy recovery ventilator. This applies to new construction and retrofit projects.

American ALDES in cooperation with FPL offers a wide range of Energy Recovery Ventilator (ERV) solutions that qualify for rebates to building owners for up to \$25,200 (See page 4).

It is as easy as selecting the correct American ALDES air exchanger and filling out a simple one page form (See page 3).

STANDARD COMMERCIAL SERIES



Benefits of an American ALDES Energy Recovery Ventilator (ERV)

- **Reduce HVAC energy consumption** by reducing the need to cool or heat outside air.
- **Reduce peak demand** by reducing the need for cooling and heating. An ERV can help lower a building's peak demand, thereby lowering your electric bill even further by requiring less power during times when rates are highest.
- **Improve humidity control** by removing moisture from incoming ventilation air.
- **Provide appropriate ventilation** by reducing the energy needed by the HVAC system to condition outside air. This savings can encourage building operators to increase the amount of outside air ventilation. This has been shown by numerous scientific studies to increase health and productivity of the occupants.

ERV's are Cost Effective Before Rebates

Energy Recovery Ventilator benefits are well established, and installed costs are relatively stable. Simple payback periods for **retrofit** installations of an American ALDES ERV can range from two to five years in hot and humid climates.

An American ALDES Energy Recovery Ventilator installation in **new construction** projects can yield much shorter payback periods as a result of downsizing the cooling and heating equipment in response to lower ventilation loads.

ERV Rebate Form

Fill out the sections outlined in red, shown below, on the ERV Rebate Form*. Call American ALDES (941) 351-3441, visit www.aldes.us/resources, or E-mail info@americanaldes.com to get the rebate form and have your questions answered.



Advanced Commercial Series Unit

FPL Business HVAC Forms

ERV Rebate Form

Florida Power & Light Company Business HVAC Rebate Certificate Energy Recovery Ventilator Form			
Job Number			
FPL Customer Account Information		Indicate Payee: Vendor <input type="checkbox"/> Customer <input checked="" type="checkbox"/>	
FPL Account Number 0121345		Payee Tax ID (If Incorp.) 0123456789	
Customer/Facility Type Apartment		Payee S.S. No. (If not Incorp.)	
Name John Doe		Vendor Name John Doe, Inc.	
Phone Number (23) 555-6789		SAP No. 1234	
Address 123 Main Street		Phone Number (23) 555-9876	
Contact Person John Doe		Address 124 Main Street	
City Anytown		Contact Person Jane Doe	
State P A		City Anytown	
Zip Code 0 1234		State P A	
		Zip Code 0 1235	
Cooling Rebate Info			
AHRI Net Thermal Effect Rating		Cooling <u>73</u> %	
		(Must be 50% or Greater)	
Bldg Cooling Source Type		<u>2</u>	
		1 = Air Cool Dx 2 = Water Cool Dx 3 = Air Cool Recip Chill 4 = Air Cool Screw/Scroll Chill 5 = Water Cool Screw/Scroll Chill 6 = Water Cool Cent Chill 7 = Water Source Heat Pump 8 = PTAC/PTHP	
Heating Rebate Info			
AHRI Net Thermal Effect Rating		Heating <u>73</u> %	
		<u>1</u>	
Bldg Heating Source Type		(For Note 3 & 4 use - No Electric Heat ERV Table)	
Model Number		<u>AW123</u>	
		1 = Electric Strip 2 = Heat Pump 3 = Gas or Fuel Oil 4 = No Heat	
Energy Recovery Ventilator Rebate			
Energy Recovery Ventilator Type		<u>1</u>	
AHRI Model Number		<u>CW10000</u>	
Bldg Airflow cfm		<u>9000</u>	
AHRI 100% Airflow @ 0" Dif cfm		<u>9000</u>	
		1 = Sensible & Latent Heat Wheel 2 = Sensible Only Heat Wheel 3 = Sensible & Latent Plate 4 = Sensible Only Plate 5 = Sensible Heat Pipe 6 = Other 75% AHRI Rating Used <input type="checkbox"/> AHRI Pres Drop <u>1</u> inches	
Rates From Tables			
Calculations			
Number of ERV's Installed		====> <u>1</u> units	
		<u>\$25,200</u> Total Rebate	

Fill in these outlined sections with your information to receive your ERV rebate.

FPL Use Only		
NEW CONSTRUCTION YES <input type="checkbox"/> NO <input type="checkbox"/>		
Cooling _____ kW Reduction		
Local Check <input type="checkbox"/>		
Internal Order	GL Account	Total Rebate Amount
6410000000	6730000	
<i>John Doe</i>	John Doe	5/17/16
CUSTOMER SIGNATURE	PRINT NAME	DATE
My signature on this FPL Business HVAC Rebate Certificate indicates that the above described energy saving measures has been fully installed and that I understand and agree to the terms on the reverse side (or attached), including the Disclaimer.		
Print	SLID	Customer Segment
VERIFIED BY:	SMB <input type="checkbox"/>	Nat Accts <input type="checkbox"/>
RESPONSIBLE REP:	Large C/I <input type="checkbox"/>	Govt <input type="checkbox"/>
Certified by Contractor Sales Specialist		
Date		
NON-NEGOTIABLE, VOID AFTER 6 MONTHS FROM DATE OF INSTALLATION		
REV 1/28/2016		

Effective: November 9, 2015

* Example shown. Rebates will vary based on ERV models.

AHRI Performance Data



ALDES Model Number*	Product Type	Nominal Airflow	Pressure Drop	Airflow Cool 75% Net Total	Airflow Cool 100% Net Total	Rebate per CFM at 75% Net	Rebate per CFM at 100% Net	Max Rebate	Rebate at 75%	Rebate at 100%
E240-RI	Plate	150	0.22	53	49	\$2.25	\$0.00	\$253	\$253	\$0
E650-FI	Plate	300	0.22	53	49	\$2.25	\$0.00	\$506	\$506	\$0
E1100-FI	Plate	450	0.22	53	49	\$2.25	\$0.00	\$759	\$759	\$0
SE1000E-HE	Plate	700	0.54	57	53	\$2.33	\$2.09	\$1,463	\$1,223	\$1,463
SE1000I-HLT	Plate	750	0.70	59	55	\$2.23	\$2.23	\$1,673	\$1,254	\$1,673
SE2000E-HE	Plate	1400	0.54	57	53	\$2.33	\$2.09	\$2,926	\$2,447	\$2,926
SE2000I-HLT	Plate	1500	0.70	59	55	\$2.23	\$2.23	\$3,345	\$2,509	\$3,345
SE3000E-HE	Plate	2100	0.54	57	53	\$2.33	\$2.09	\$4,389	\$3,670	\$4,389
SE3000I-HLT	Plate	2250	0.70	59	55	\$2.23	\$2.23	\$5,018	\$3,763	\$5,018
SE4000E-HE	Plate	2800	0.54	57	53	\$2.33	\$2.09	\$5,852	\$4,893	\$5,852
SE4000I-HLT	Plate	3000	0.70	59	55	\$2.23	\$2.23	\$6,690	\$5,018	\$6,690
LW1500E	Wheel	1400	1.00	77	73	\$3.04	\$2.80	\$3,920	\$3,192	\$3,920
LW3000E	Wheel	2700	1.00	77	73	\$3.04	\$2.80	\$7,560	\$6,156	\$7,560
LE2000E-HE	Plate	1050	0.40	57	53	\$2.39	\$2.14	\$2,247	\$1,882	\$2,247
LE3000E-HE	Plate	1900	0.64	56	53	\$2.28	\$2.04	\$3,876	\$3,249	\$3,876
CE2000-HE	Plate	1050	0.40	57	53	\$2.39	\$2.14	\$2,247	\$1,882	\$2,247
CE3000-HE	Plate	1900	0.64	56	53	\$2.28	\$2.04	\$3,876	\$3,249	\$3,876
CE5000-HE	Plate	2600	0.63	56	53	\$2.28	\$2.04	\$5,304	\$4,446	\$5,304
CE6500-HE	Plate	4400	1.48	56	53	\$1.81	\$1.56	\$6,864	\$5,973	\$6,864
CE8000-HE	Plate	5400	1.46	56	53	\$1.81	\$1.81	\$9,774	\$7,330	\$9,774
CE8000-SE	Plate	5400	0.89	50	46	\$1.88	\$0.00	\$7,614	\$7,614	\$0
CE10000-HE	Plate	6600	1.48	56	53	\$1.81	\$1.56	\$10,296	\$8,960	\$10,296
CW2000	Wheel	2200	1.00	77	73	\$3.04	\$2.80	\$6,160	\$5,016	\$6,160
CW3000	Wheel	2700	1.00	77	73	\$3.04	\$2.80	\$7,560	\$6,156	\$7,560
CW5000	Wheel	4700	1.00	77	73	\$3.04	\$2.80	\$13,160	\$10,716	\$13,160
CW6500	Wheel	5600	1.00	77	73	\$3.04	\$2.80	\$15,680	\$12,768	\$15,680
CW8000	Wheel	7600	1.00	77	73	\$3.04	\$2.80	\$21,280	\$17,328	\$21,280
CW10000	Wheel	9000	1.00	77	73	\$3.04	\$2.80	\$25,200	\$20,520	\$25,200

* All available in indoor and outdoor models.

American ALDES Ventilation Corporation
 4521 19th Street Court East, Suite 104 - Bradenton, FL 34203 USA
 Tel: 941.351.3441 - Fax: 941.351.3442 - Toll-Free: 1.800.255.7749 - www.aldes.us

© 2016 American ALDES Ventilation Corporation. Reproduction or distribution, in whole or in part, of this document, in any form or by any means, without the express written consent of American ALDES Ventilation Corporation, is strictly prohibited. The information contained within this document is subject to change without prior written notice.

